

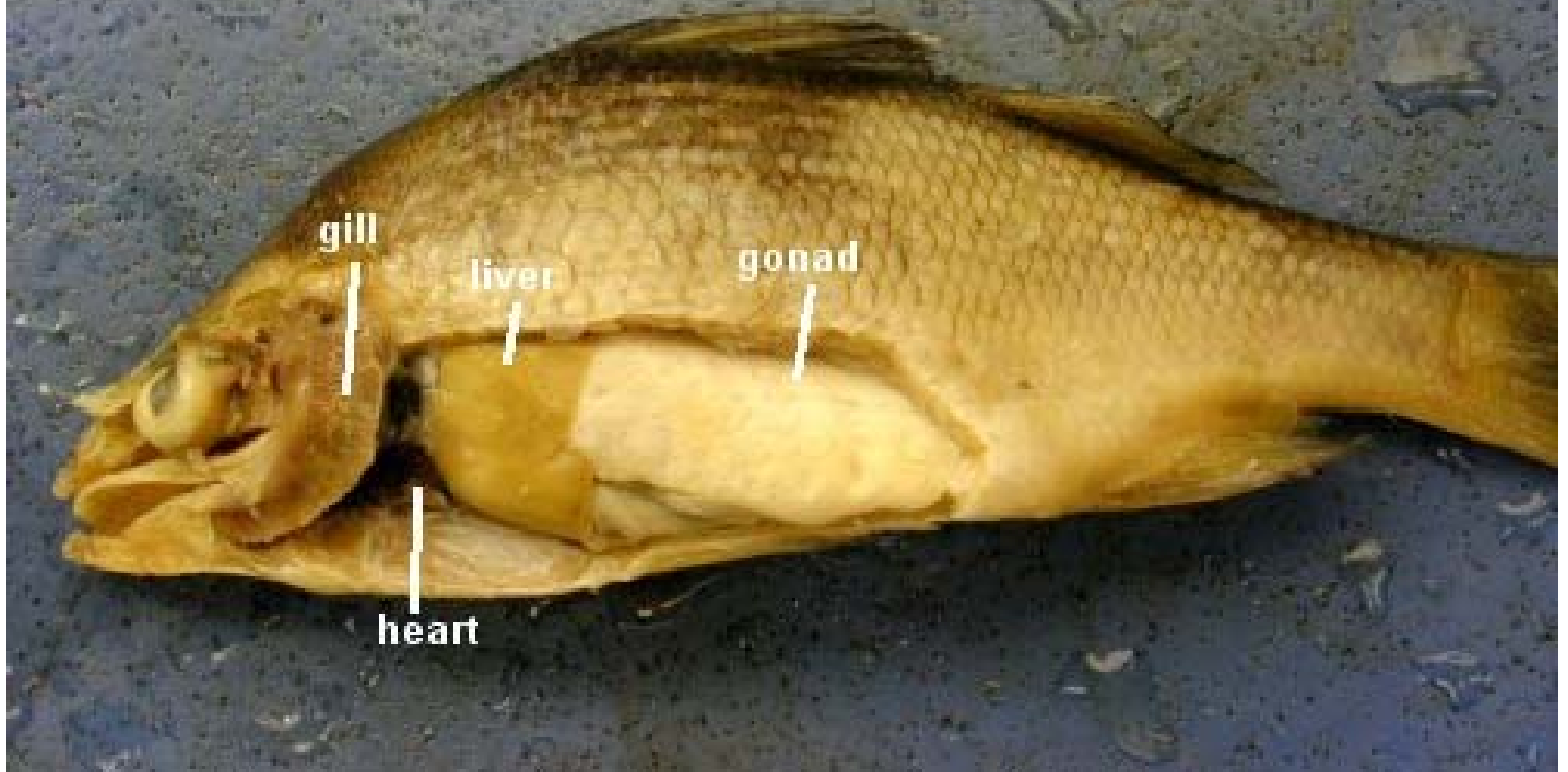
# Fish Dissections

- Use caution
  - Delicately make incisions
  - Use scissors
- Cut medial line on ventral side
- Cut lateral section out to view internal anatomy through a “window” on the side

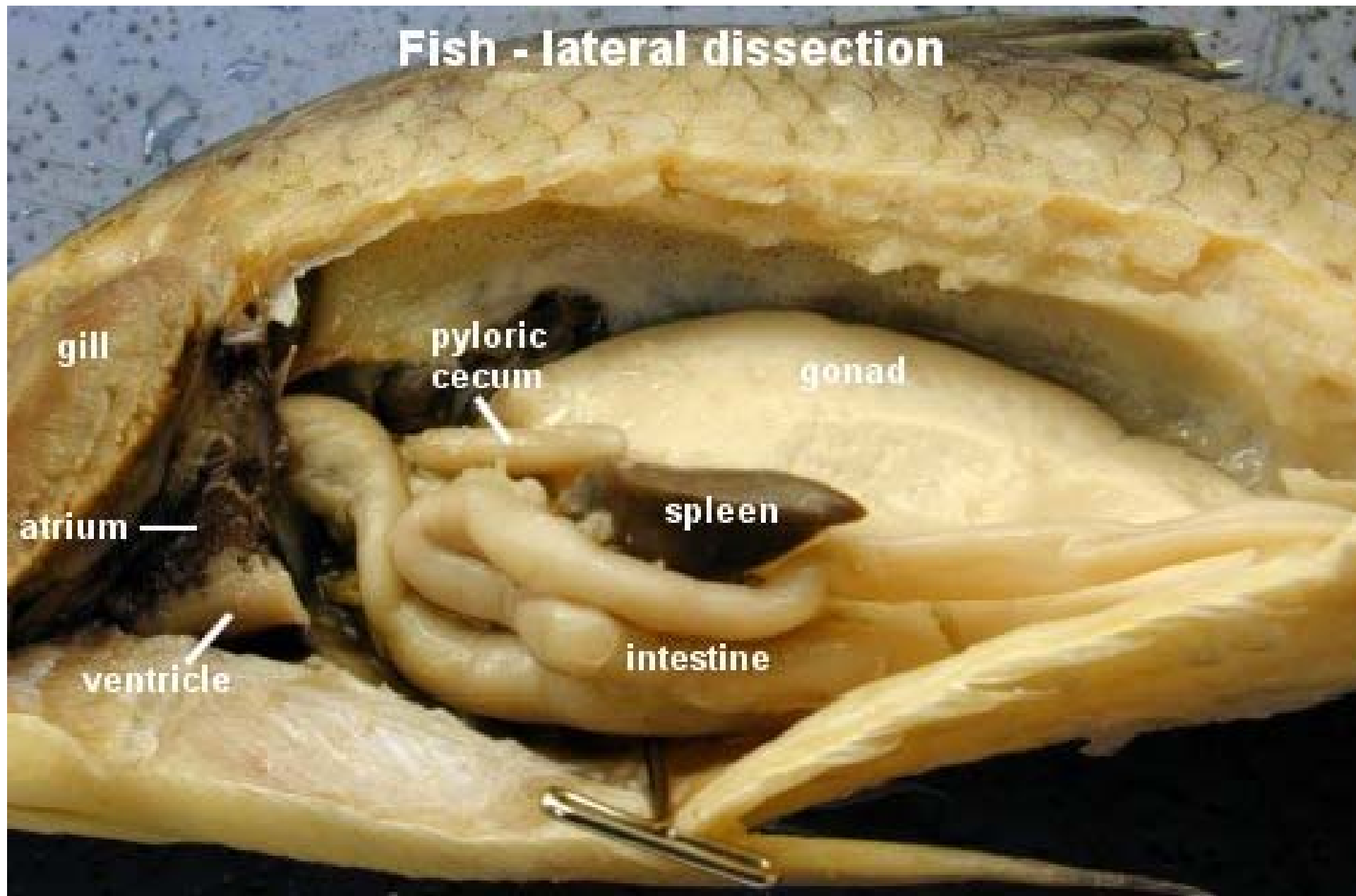
# Short guide to fish dissection

- Remove gill arches
  - Pharyngeal Teeth
  - Gill Rakers
  - Gill lamellae
- Remove a section of scales
  - Examine under compound microscope (Aging organisms)
- Examine musculature
  - hypaxial/epaxial muscles
- Examine mouth structure
- Track digestive system
  - Identification of parts
  - Compare and examine fish with respect to digestive tract complexity and length
- Heart and circulatory structure
- Misc. Identification of parts
  - *i.e.*, Excretory and reproductive system, swim bladder

## Fish - lateral dissection



## Fish - lateral dissection



## Fish - lateral dissection

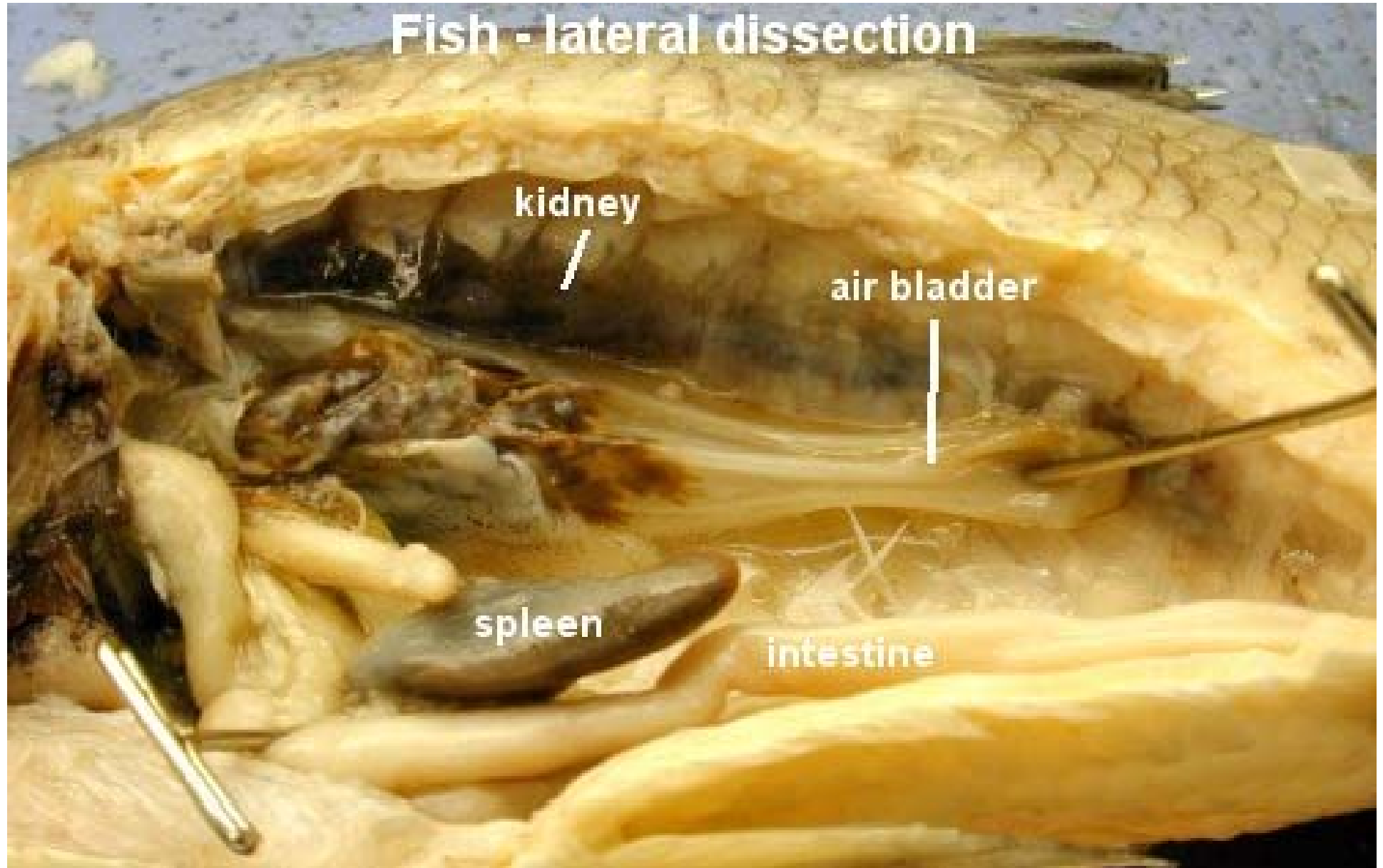
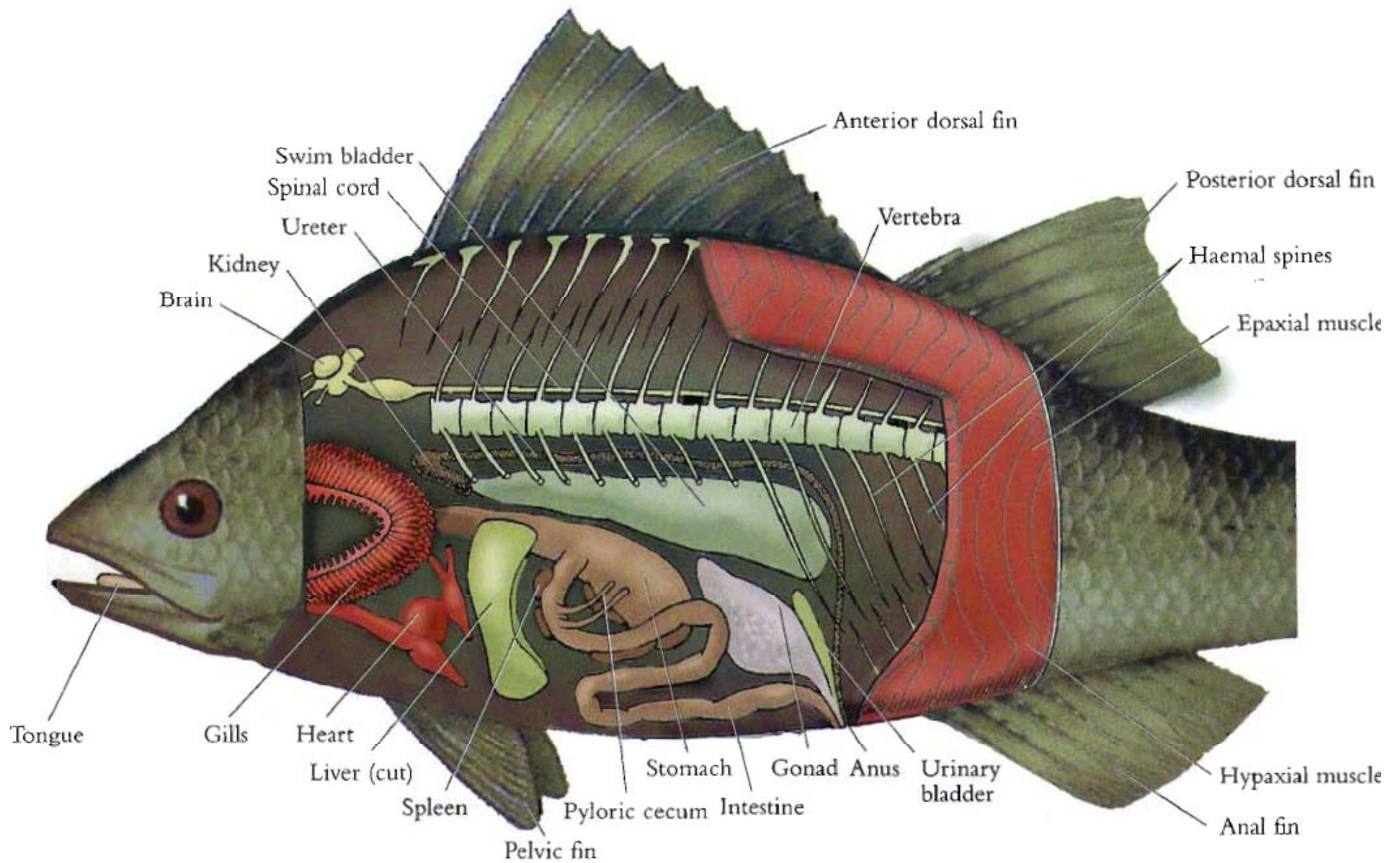


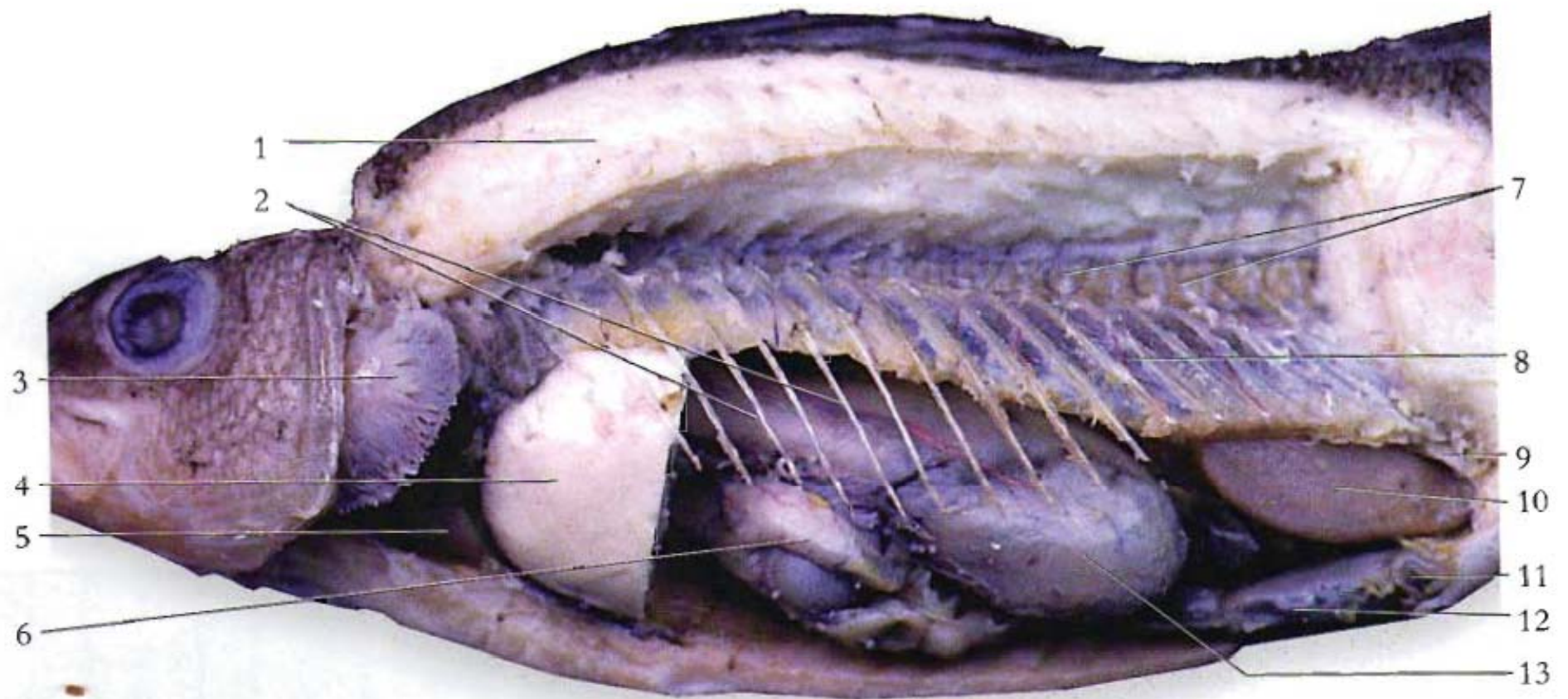
Image ©  
M. Lockett





**Figure 13.27** Anatomy of a perch.





**Figure 13.28** Viscera of a perch.

- |                    |                    |               |
|--------------------|--------------------|---------------|
| 1. Epaxial muscles | 6. Pyloric cecum   | 11. Anus      |
| 2. Ribs            | 7. Vertebrae       | 12. Intestine |
| 3. Gill            | 8. Swim bladder    | 13. Stomach   |
| 4. Liver (cut)     | 9. Urinary bladder |               |
| 5. Heart           | 10. Gonad          |               |



- <http://www.amonline.net.au/fishes/students/dissect/index.htm>